




- Fridays' Swyx Tip
- 
- 

Fridays' Swyx Tip

 A group blog by Mirjam Baumberger in General



Fridays' Swyx Tip #27: Control with "Change Log"



Entry posted by Tom Wellige March 20, 2020
602 views

From 2009 to 2011 [mirjam baumberger](#) wrote a great blog, the "**Fridays' Swyx Tip**". Every Friday she posted a tip regarding the usage of SwyxWare and connected tools and devices. As the old forum is **offline**, this article series will be restored here again over the time. Please note that some information in this article series might not be valid anymore with current SwyxWare versions.

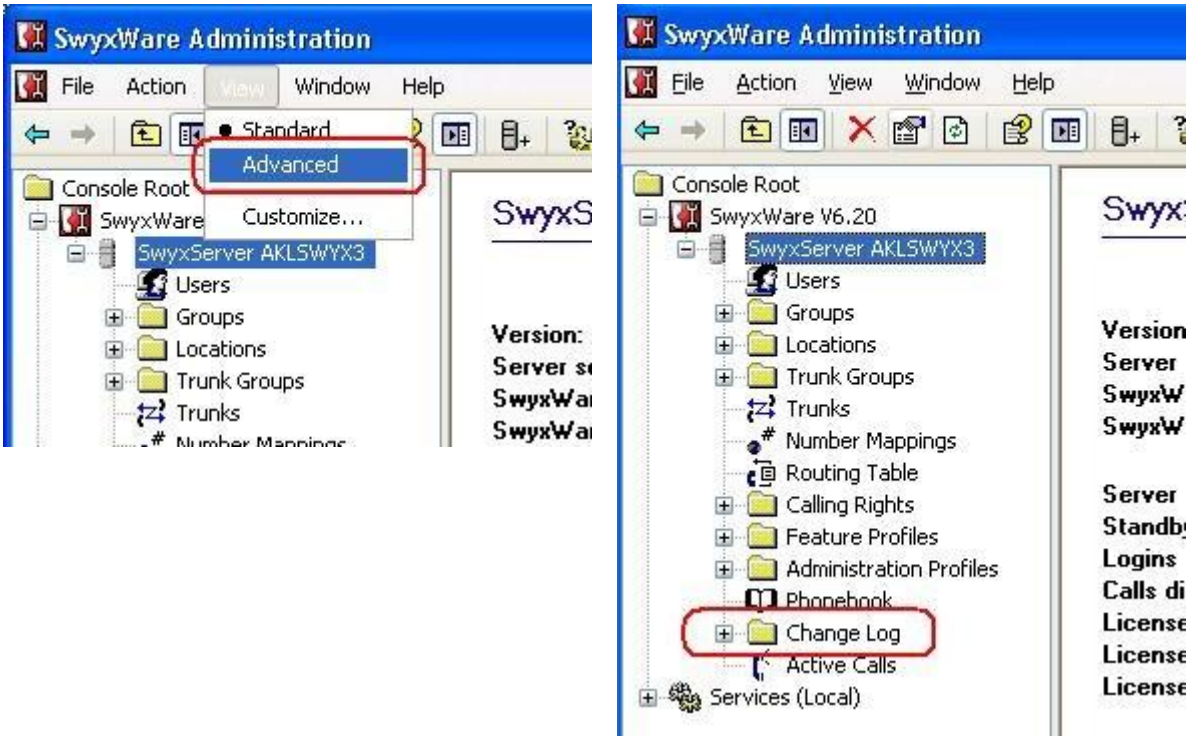
This blog article was originally posted on 03.09.2009 22:55

Dear Swyx Users

Did you know that there is a "Change Log" available which provides administrators an overview of any PBX modification at a glance?

The administrators stay in control of any changes that have happened to the phone system. In SwyxWare Administration one has an overview of all modification that happen on the system. This means that it is always possible to track which administrator made which changes.

1. To view the "Change Log" open SwyxWare Administration and go to menu View/Advanced
2. In the tree view on the left the new topic "Change Log" is now visible



Changes that are made to the configuration of users or trunks, or the conference rooms, are logged and saved. All the changes are grouped into monthly periods and are stored for the last 12 month.

Date	Administrator	Modified Item	Kind of Modification	Old v.
08.02.2009 11:27:10	ITNETWORLD LTD\thom	xrtmcallrouting	Profile of user changed	
08.02.2009 11:27:10	ITNETWORLD LTD\thom	xrtmcallrouting	User added	
12.02.2009 13:57:37	ITNETWORLD LTD\mba	David	Username changed	Gener
14.02.2009 16:23:45	ITNETWORLD LTD\adminis...	t0415120271	Number of fax channels changed	
14.02.2009 16:23:45	ITNETWORLD LTD\adminis...	t0415120271	Number of voice channels cha...	
14.02.2009 16:44:12	ITNETWORLD LTD\adminis...	xrtCallsFromDynamic...	Profile of user changed	
14.02.2009 16:44:12	ITNETWORLD LTD\adminis...	xrtCallsFromDynamic...	User added	
23.02.2009 22:21:51	ITNETWORLD LTD\æeg	xrtUclIN	Profile of user changed	
23.02.2009 22:21:51	ITNETWORLD LTD\æeg	xrtUclIN	User added	
23.02.2009 22:22:47	ITNETWORLD LTD\adminis...	pap2_rinnger	Profile of user changed	
23.02.2009 22:22:47	ITNETWORLD LTD\adminis...	pap2_rinnger	User added	
23.02.2009 22:24:24	ITNETWORLD LTD\adminis...	pap2_ringer	Username changed	pap2_

Format of the entries

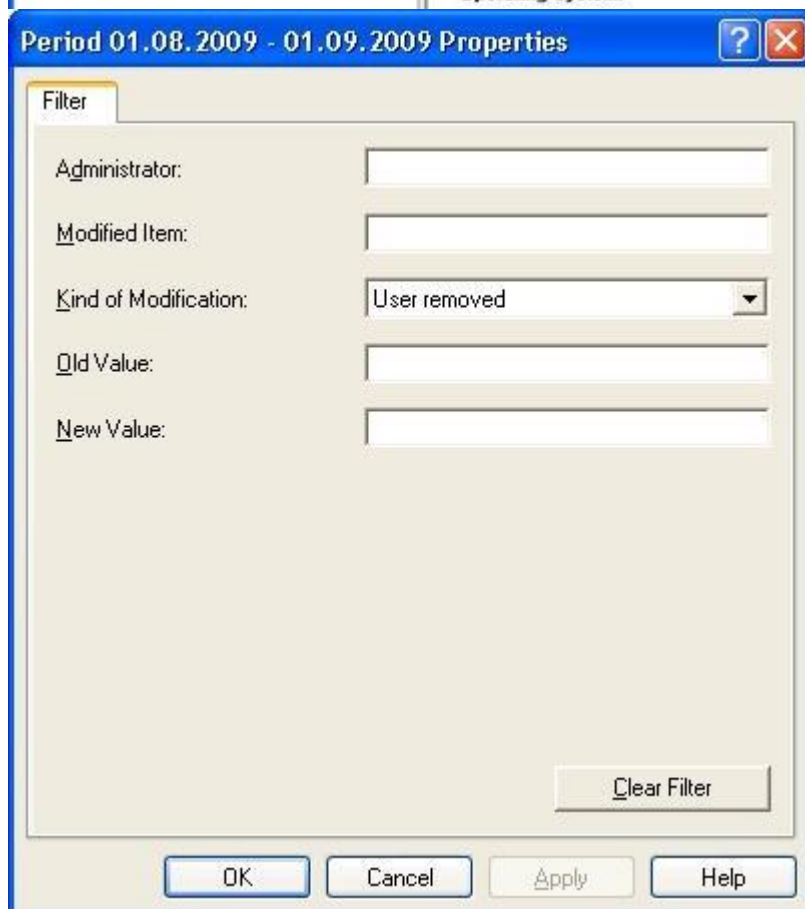
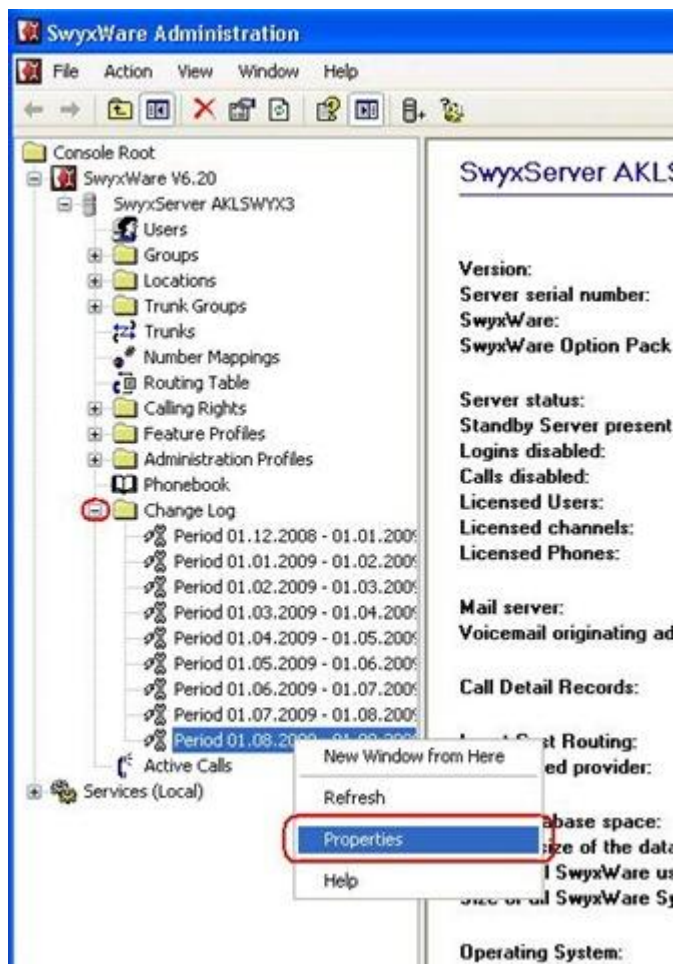
The following details are recorded for each change:

- Date of change
- User who made the change (Windows user or SwyxWare user)
- Changed parameter (feature profile, user, voice or fax channel, conference)
- Type of change
- Original value (if available)
- New value (if available)

Further it is also possible to search in the "Change Log". Below quick instruction on how you search for an entry:

In the shortcut menu for the period, click on "Properties".

A filter mask will open where one has various filter criteria



Note: The "Change Log" was introduced with SwyxWare V6.20


Have a good weekend and happy Swyxing...

Regards

Mirjam

@ IT Net World Ltd, NZ & AUS SWYX Distributor

<http://www.itnetworld.co.nz/>

 Share

Followers

1

< Previous entry
Fridays' Swyx Tip #26: Ad-hoc conference

Next entry >
Fridays' Swyx Tip #28: Project Codes

0 Comments

There are no comments to display.

Create an account or sign in to comment

You need to be a member in order to leave a comment

Create an account

Sign up for a new account in our community. It's easy!

Register a new account

Sign in

Already have an account? Sign in here.

Sign In Now

Theme ▼

Copyright (c) 2007-2025 by Tom Wellige
Powered by Invision Community